

Building the Future

How the Low-Code Application Platform (LCAP) is Changing the Construction Industry

Every construction project is different. Every owner, every general contractor, every subcontractor, every program manager is unique.

As the construction industry evolves – with more of these stakeholders recognizing how digital transformation can help them better streamline processes and reduce risk – choosing the right information management tool is one of the most critical elements of a project.

With business strategy and technology strategy increasingly intertwined, outdated technology often limits strategic options and business agility. To resolve these limitations, **updating technology architecture** is a necessity.

A cloud-based consolidated platform that connects all aspects of construction management considers three factors: time to delivery, time for training and cost.

Knowing this, Kahua designed its project management information system (PMIS) as a platform that can be easily modified to meet the



most specific needs. As the construction industry's only enterprise **low-code application platform** (LCAP), Kahua has enabled the development of more than 600 apps to enhance software for customers' needs. If a user envisions an application not currently built, one of Kahua's partners can create it for them or provide insight so the client can build it!

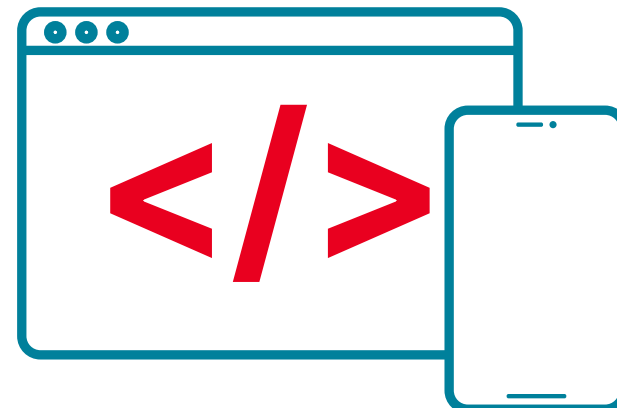
One of Kahua's great differentiators is the ease of transforming ideas into apps and then turning those apps into value, incredibly fast. From a tweak to an existing Kahua app to the creation of a complex enterprise solution, the kBuilder low code platform arms you with everything you need to build, integrate, test, deploy and manage apps in Kahua.

Kahua software is so powerful, it can **conform exactly to your current processes** while also providing the **agility to rapidly pivot** with the ever-increasing pace of change. This software enables operational efficiency by letting you run the business the way you want to ... rather than the way the software tells you to.

Kahua scales with you

You don't have to wait for a software upgrade or submit a vendor request for new features and hope that what you need will make it into the next release. Great ideas can only add value if implemented, and with Kahua, you can take your business exactly where you want it to go.

Kahua empowers your entire team to innovate, leveraging their collective knowledge, experience and creativity. From a simple change today to transformational ideas you haven't even thought of yet, the Kahua low-code platform can be the core of your company's innovation program.



Why LCAP Matters to Your Construction Projects:



Kahua is a complete low-code solution with a wizard user interface for app definition and a graphical drag-and-drop tool for workflows. This makes it easy to create or modify objects to enable enterprise or project specific functionality, workflow and reporting.



Keep the most up to date project information at your fingertips. Every app is responsively available on desktop and mobile devices to support users in the office and out in the field.



The apps you use for your organization's workflow will automatically inherit the intuitive Kahua UI, which reduces time and expense to train your users.

Learn how Kahua's LCAP technology can help execute and manage your projects.

Kahua is a leading provider of capital program and construction project management software, enabling innovation that is changing the way that capital programs are planned and delivered. Kahua's purpose-built solutions for owners, program managers and contractors enable rapid implementation that minimizes time-to-value and enhances user adoption. As the industry's only low-code application platform, customers can easily customize existing Kahua apps or even build their own new apps to run their business at peak efficiency today and rapidly adapt as business conditions dictate. www.kahua.com/how-it-works/kbuilder/

